


Middle Atlantic Products

EXCEPTIONAL SUPPORT & PROTECTION™

SRB Series Seismic Certified Riser Bases


SEISMIC CERTIFIED

Seismic Certified Riser Bases provide advanced cable management and are ideal for use in seismic applications

Features

- 11-gauge fully welded construction
- 1,000 lb. weight capacity for single bay, 1,750 lbs. for 2 bay and 2,450 lbs. for 3 bay
- Seismic certified bases allow for field rough-in prior to arrival of racks and enclosures
- Seismic certified with an Ip value of 1.5
- Offered in single bay to three bay configurations
- Seismic certified bases act as a lower cable chase for passing cables between racks in multi-bay installations
- Ideal for use in raised floor installations and in environments that require seismic certification
- Durable black textured powder coat finish
- Only 4 feet per riser base to save on installation time



SRB SERIES

Architects' and Engineers' Specifications

Seismic certified riser base shall be Middle Atlantic Products model # SRB-___-___-24 (refer to chart) to accommodate ___ qty (1,2,3) MRK/VRK/BGR/DRK/WMRK Series racks. Seismic certified riser base shall be constructed of 11-gauge steel and shall be 24" H x ___" W x ___" D (refer to chart). Seismic certified riser bases shall be finished with a durable textured black powder coat finish. Seismic Certified Riser Bases shall satisfy the 2007 & 2010 CBC; 2006, 2009 & 2012 IBC; ASCE 7-05 (2005 Edition) & ASCE 7-10 (2010 Edition) and the 2006 & 2009 editions of NFPA 5000 for use in areas of high seismicity, Seismic Use Group III, Zone 4 or Seismic Design Category (SDC) "D" with lateral force requirements for protecting 1,000 lbs. of essential equipment (1 Bay), 1,750 lbs. of essential equipment (2 Bay), and 2,450 lbs. of essential equipment (3 Bay) in upper floor installations when used in conjunction with the ___ floor anchor brackets (refer to chart). Rack shall be OSHPD approved for fixed equipment anchorage in California healthcare facilities. SRB shall be GREENGUARD Indoor Air Quality Certified for Children and Schools. SRB shall be RoHS EU Directive

2002 / 95 / EC compliant. Seismic certified riser base shall be warrantied to be free from defects in material or workmanship under normal use and conditions for the lifetime of the product.

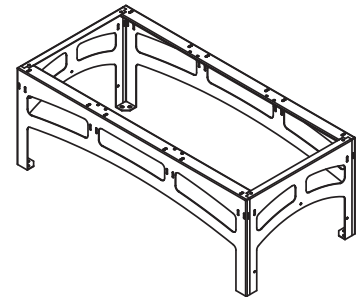
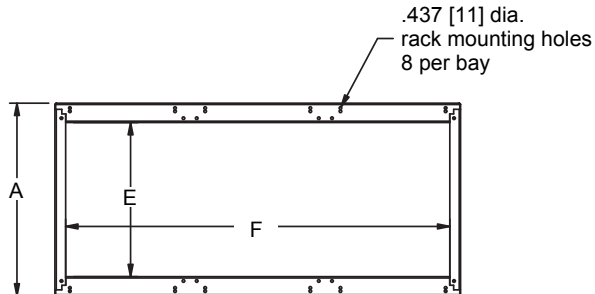
OPTIONS

- Support angles shall be Middle Atlantic Products model # ANGLE-___ (for use in conjunction with raised floors) for use with ___ (1,2,3) bay. Support angles shall be constructed from 11-gauge steel and be phosphate pre-treated and finished in a durable black powder coat.
- Custom heights from 9" - 24" available upon request

CUSTOMIZABLE SPECIFICATION CLIPS AVAILABLE AT MIDDLEATLANTIC.COM

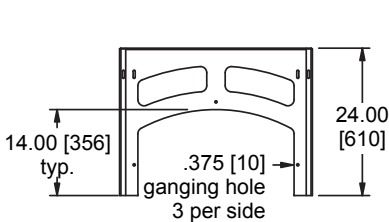
SRB basic dimensions

All dimensions in inches unless otherwise noted [All dimensions in brackets are millimeters]

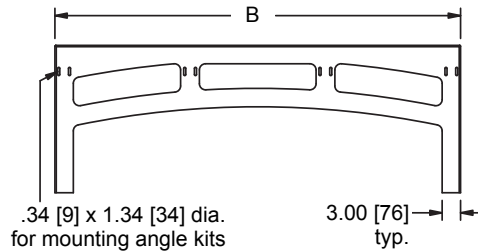


NOTE: Z4 Mounting brackets required:
MRK-Z4 - For MRK, DRK series racks - 1 per rack
VRK-Z4 - For VRK series racks - 1 per rack
WMRK-Z4 - For WMRK series racks - 1 per rack
BGR-Z4/BGR-ISO-Z4 - For BGR series racks - 1 per rack

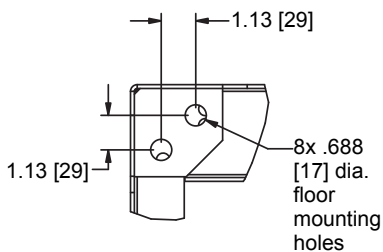
TOP VIEW



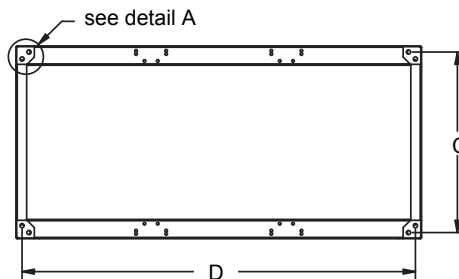
SIDE VIEW



FRONT VIEW

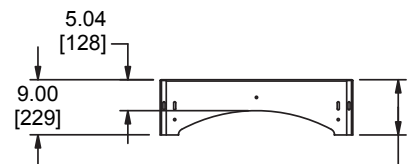


DETAIL A

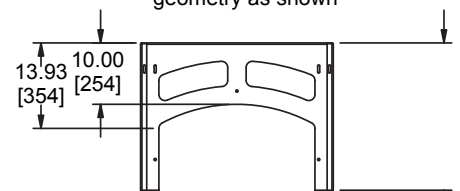


BOTTOM VIEW

CUSTOM SIZES



custom sizes available between 9.0 [229] min. and 13.9 [355] max. using fixed geometry as shown



custom sizes available between 14.0 [356] min. and 24.0 [610] max. using fixed geometry as shown



Part #	A Depth	B Width	C Depth Mounting Hole center to center	D Width Mounting Hole center to center	E Opening Depth	F Opening Width
SRB-1-DRK-3124	31.40 [798]	30.00 [762]	29.40 [747]	28.00 [711]	25.10 [638]	26.50 [673]
SRB-2-DRK-3124	31.40 [798]	60.03 [1525]	29.40 [747]	58.03 [1474]	25.10 [638]	56.53 [1436]
SRB-1-DRK-3624	36.00 [914]	30.00 [762]	34.00 [864]	28.00 [711]	29.70 [754]	26.50 [673]
SRB-2-DRK-3624	36.00 [914]	60.03 [1525]	34.00 [864]	58.03 [1474]	29.70 [754]	56.53 [1436]
SRB-1-DRK-4224	42.00 [1067]	30.00 [762]	40.00 [1016]	28.00 [711]	35.70 [907]	26.50 [673]
SRB-2-DRK-4224	42.00 [1067]	60.03 [1525]	40.00 [1016]	58.03 [1474]	35.70 [907]	56.53 [1436]
SRB-1-DRK-4824	48.00 [1219]	30.00 [762]	46.00 [1168]	28.00 [711]	41.70 [1059]	26.50 [673]
SRB-2-DRK-4824	48.00 [1219]	60.03 [1525]	46.00 [1168]	58.03 [1474]	41.70 [1059]	56.53 [1436]
SRB-1-MRK-2424	24.00 [610]	22.00 [559]	22.00 [559]	20.00 [508]	17.70 [450]	18.50 [470]
SRB-2-MRK-2424	24.00 [610]	44.03 [1118]	22.00 [559]	42.03 [1068]	17.70 [450]	40.53 [1029]
SRB-3-MRK-2424	24.00 [610]	66.06 [1678]	22.00 [559]	64.06 [1627]	17.70 [450]	62.56 [1589]
SRB-1-MRK-2624	26.40 [671]	22.00 [559]	24.40 [620]	20.00 [508]	20.10 [511]	18.50 [470]
SRB-2-MRK-2624	26.40 [671]	44.03 [1118]	24.40 [620]	42.03 [1068]	20.10 [511]	40.53 [1029]
SRB-3-MRK-2624	26.40 [671]	66.06 [1678]	24.40 [620]	64.06 [1627]	20.10 [511]	62.56 [1589]
SRB-1-MRK-3124	31.40 [798]	22.00 [559]	29.40 [747]	20.00 [508]	25.10 [638]	18.50 [470]
SRB-2-MRK-3124	31.40 [798]	44.03 [1118]	29.40 [747]	42.03 [1068]	25.10 [638]	40.53 [1029]
SRB-3-MRK-3124	31.40 [798]	66.06 [1678]	29.40 [747]	64.06 [1627]	25.10 [638]	62.56 [1589]
SRB-1-MRK-3624	36.00 [914]	22.00 [559]	34.00 [864]	20.00 [508]	29.70 [754]	18.50 [470]
SRB-2-MRK-3624	36.00 [914]	44.03 [1118]	34.00 [864]	42.03 [1068]	29.70 [754]	40.53 [1029]
SRB-3-MRK-3624	36.00 [914]	66.06 [1678]	34.00 [864]	64.06 [1627]	29.70 [754]	62.56 [1589]
SRB-1-MRK-4224	42.00 [1067]	22.00 [559]	40.00 [1016]	20.00 [508]	35.70 [907]	18.50 [470]
SRB-2-MRK-4224	42.00 [1067]	44.03 [1118]	40.00 [1016]	42.03 [1068]	35.70 [907]	40.53 [1029]
SRB-3-MRK-4224	42.00 [1067]	66.06 [1678]	40.00 [1016]	64.06 [1627]	35.70 [907]	62.56 [1589]
SRB-1-MRK-4824	48.00 [1219]	22.00 [559]	46.00 [1168]	20.00 [508]	41.70 [1059]	18.50 [470]
SRB-2-MRK-4824	48.00 [1219]	44.03 [1118]	46.00 [1168]	42.03 [1068]	41.70 [1059]	40.53 [1029]
SRB-3-MRK-4824	48.00 [1219]	66.06 [1678]	46.00 [1168]	64.06 [1627]	41.70 [1059]	62.56 [1589]
SRB-1-WMRK-3624	36.00 [914]	23.94 [608]	33.94 [862]	21.88 [556]	29.70 [754]	21.19 [538]
SRB-2-WMRK-3624	36.00 [914]	47.91 [1217]	33.94 [862]	45.85 [1165]	29.70 [754]	45.16 [1147]
SRB-3-WMRK-3624	36.00 [914]	71.87 [1826]	33.94 [862]	69.81 [1773]	29.70 [754]	69.12 [1756]
SRB-1-WMRK-4224	42.00 [1067]	23.94 [608]	39.94 [1015]	21.88 [556]	35.70 [907]	21.19 [538]
SRB-2-WMRK-4224	42.00 [1067]	47.91 [1217]	39.94 [1015]	45.85 [1165]	35.70 [907]	45.16 [1147]
SRB-3-WMRK-4224	42.00 [1067]	71.87 [1826]	39.94 [1015]	69.81 [1773]	35.70 [907]	69.12 [1756]
SRB-1-WMRK-4824	48.00 [1219]	23.94 [608]	45.94 [1167]	21.88 [556]	41.70 [1059]	21.19 [538]
SRB-2-WMRK-4824	48.00 [1219]	47.91 [1217]	45.94 [1167]	45.85 [1165]	41.70 [1059]	45.16 [1147]
SRB-3-WMRK-4824	48.00 [1219]	71.87 [1826]	45.94 [1167]	69.81 [1773]	41.70 [1059]	69.12 [1756]
SRB-1-BGR-3224	32.00 [813]	23.00 [584]	29.94 [761]	20.94 [532]	26.58 [675]	20.50 [521]
SRB-2-BGR-3224	32.00 [813]	46.03 [1169]	29.94 [761]	43.97 [1117]	26.58 [675]	43.53 [1106]
SRB-3-BGR-3224	32.00 [813]	69.06 [1754]	29.94 [761]	67.00 [1702]	26.58 [675]	66.56 [1691]
SRB-1-BGR-3824	38.00 [965]	23.00 [584]	35.94 [913]	20.94 [532]	32.58 [828]	20.50 [521]
SRB-2-BGR-3824	38.00 [965]	46.03 [1169]	35.94 [913]	43.97 [1117]	32.58 [828]	43.53 [1106]
SRB-3-BGR-3824	38.00 [965]	69.06 [1754]	35.94 [913]	67.00 [1702]	32.58 [828]	66.56 [1691]