



**Middle Atlantic Products**

EXCEPTIONAL SUPPORT & PROTECTION™

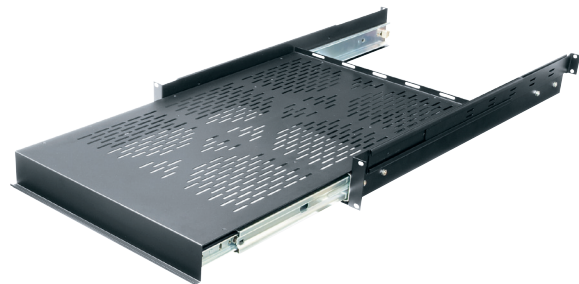
# Heavy-Duty Sliding Shelf



**Accommodates permanent, rental equipment and fixed applications**

## Features

- Deep full extension shelf allows for easy maintenance of your components right on the shelf
- Durable black finish
- Heavy-duty version, 2 rackspace with 200 lb. load capacity



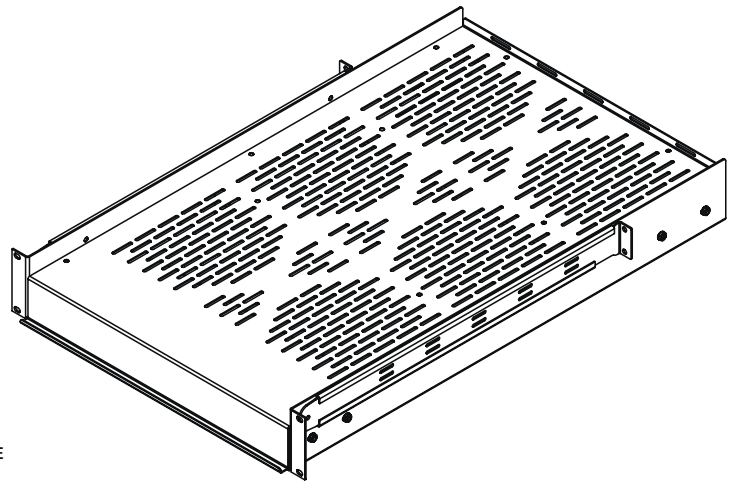
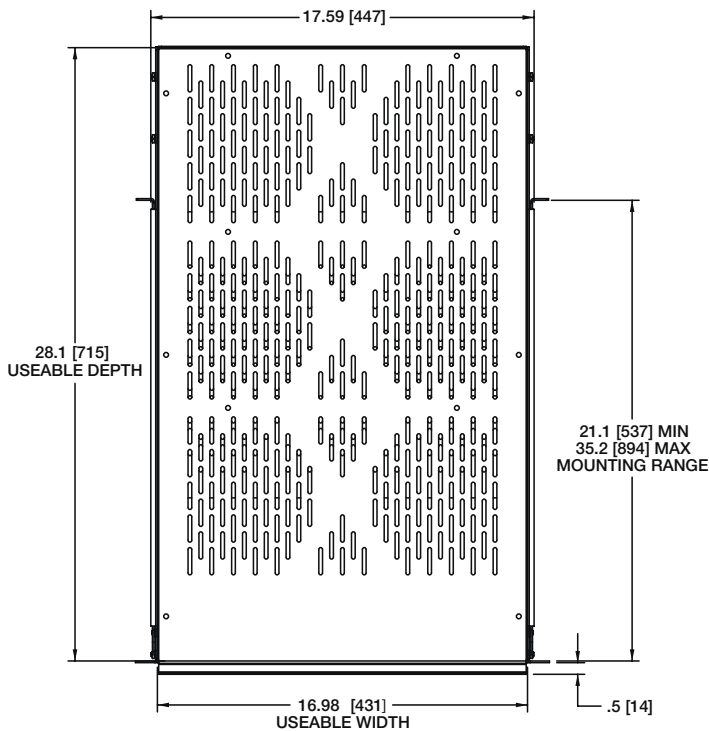
## Architects' and Engineers' Specifications

EIA/TIA compliant heavy-duty sliding shelf shall be Middle Atlantic Products model # SSHD-28. Sliding shelf area shall be 16.98" W x 28.1" D. Sliding shelf shall require 4 point mounting, and have a mounting range of 21.1" to 35.2". Sliding shelf shall occupy 2 rackspace, with a shelf height of 2.4". Maximum weight capacity shall be 200 lbs. Sliding shelf shall be GREENGUARD Indoor Air Quality Certified for Children and Schools. Sliding shelf shall be RoHS EU Directive 2002/95/EC compliant. Sliding shelf shall be manufactured by an ISO 9001 and ISO 14001 registered company. Sliding shelf shall be warrantied to be free from defects in material or workmanship under normal use and conditions for a period of three years.

**CUSTOMIZABLE SPECIFICATION CLIPS AVAILABLE AT MIDDLEATLANTIC.COM**

# Heavy-Duty Sliding Shelf basic dimensions

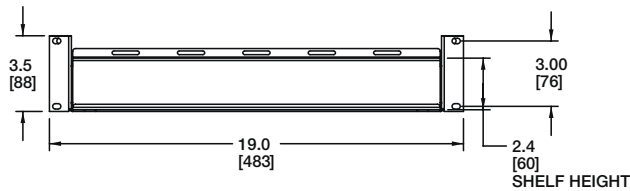
TOP VIEW  
FULLY CLOSED



**NOTES:**

- 1) DIMENSION FORMAT SHOWN IN: INCHES [mm]
- 2) WEIGHT CAPACITY: 200 lbs [90.7 kg]

FRONT VIEW



SIDE VIEW  
FULLY CLOSED

